

STL-FK160 OPTIONAL FAN INSTALLATION IN VIEWPOINT FIREPLACE



WARNING

All wiring should be done by a qualified electrician and shall be in compliance with local codes and with the National Electric Code ANSI/NFPA NO. 70-current (in the USA), or with the current CSA C22.1 Canadian Electric Code (in CA).



WARNING

MAKE SURE HOUSEHOLD BREAKER IS SHUT OFF PRIOR TO WORKING ON ANY ELECTRICAL LINES.



WARNING

THIS APPLIANCE IS EQUIPPED WITH A THREE-PRONG (GROUNDING) PLUG FOR PROTECTION AGAINST SHOCK HAZARD AND SHOULD BE PLUGGED DIRECTLY INTO A PROPERLY GROUNDED THREE-PRONG RECEPTACLE. DO NOT CUT OR REMOVE GROUNDING PRONG FROM THIS PLUG.



IMPORTANT NOTE

If installing a fan, it is easier to complete prior to connecting to gas supply. Wiring must be done before enclosing fireplace sides. An electrical box and Romex connector are pre-installed on a removable panel on right side of fireplace.



IMPORTANT NOTE

Any changes to the wiring or components of this kit will void the warranty and can cause potential harm to the fireplace, home & occupants.



IMPORTANT NOTE

This fan will not operate unless the fan has been turned on using the fireplace's remote control transmitter. The fan will turn on and off automatically. The fan will turn on 5 minutes after the fireplace is turned on and 12 minutes after the fireplace has been turned off. Adjust fan to desired speed while it is running.

For installation in the Viewpoint Series fireplaces.

STL-FK160 OPTIONAL FAN INSTALLATION IN VIEWPOINT FIREPLACE

1. Remove decorative front, glass assembly and lower vanity panel for access to the base of the fireplace.
2. **GAS LINE MUST BE DISCONNECTED TO INSTALL BLOWER.** If not disconnected, disconnect the gas line, then proceed.
3. Locate left and right side blowers. Figure 1

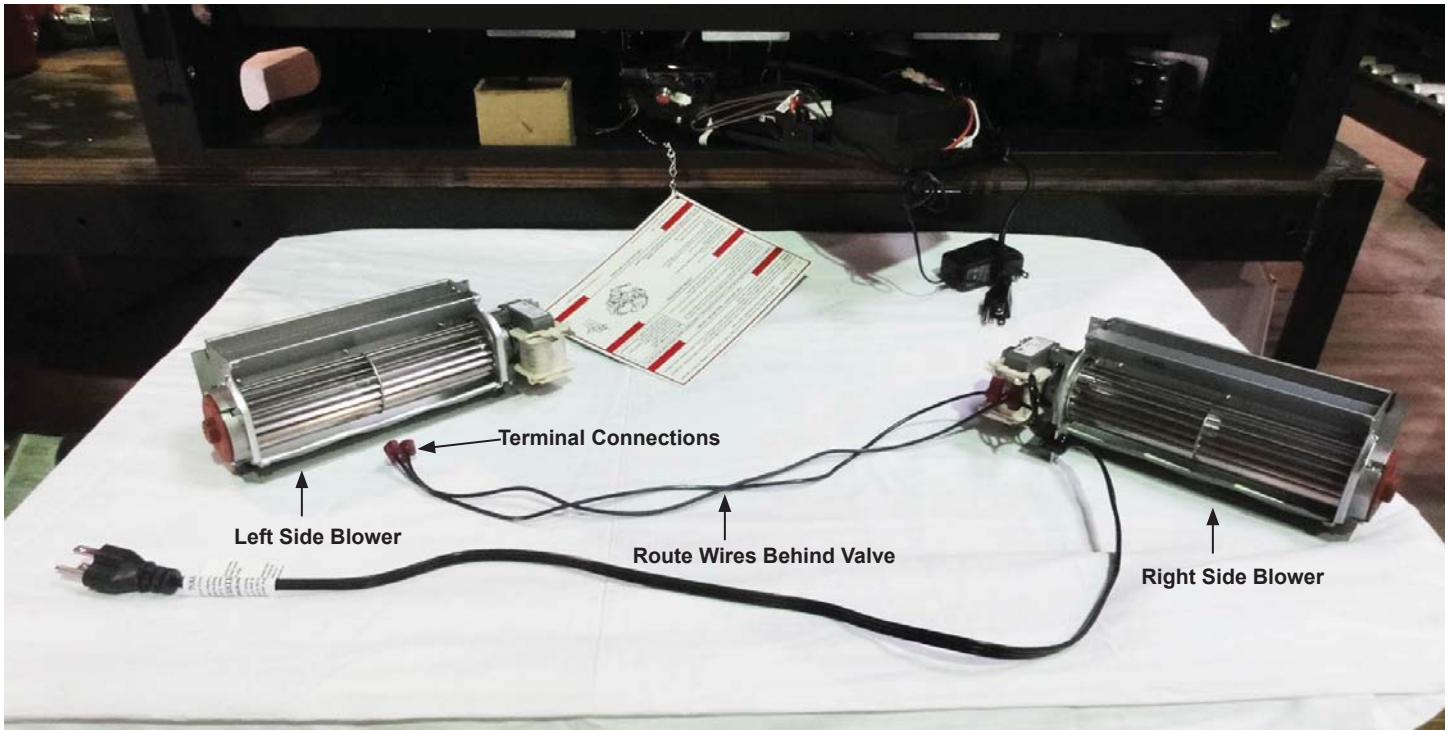


Figure 1

4. Route the left side blower to the left and behind the support leg. Figure 2

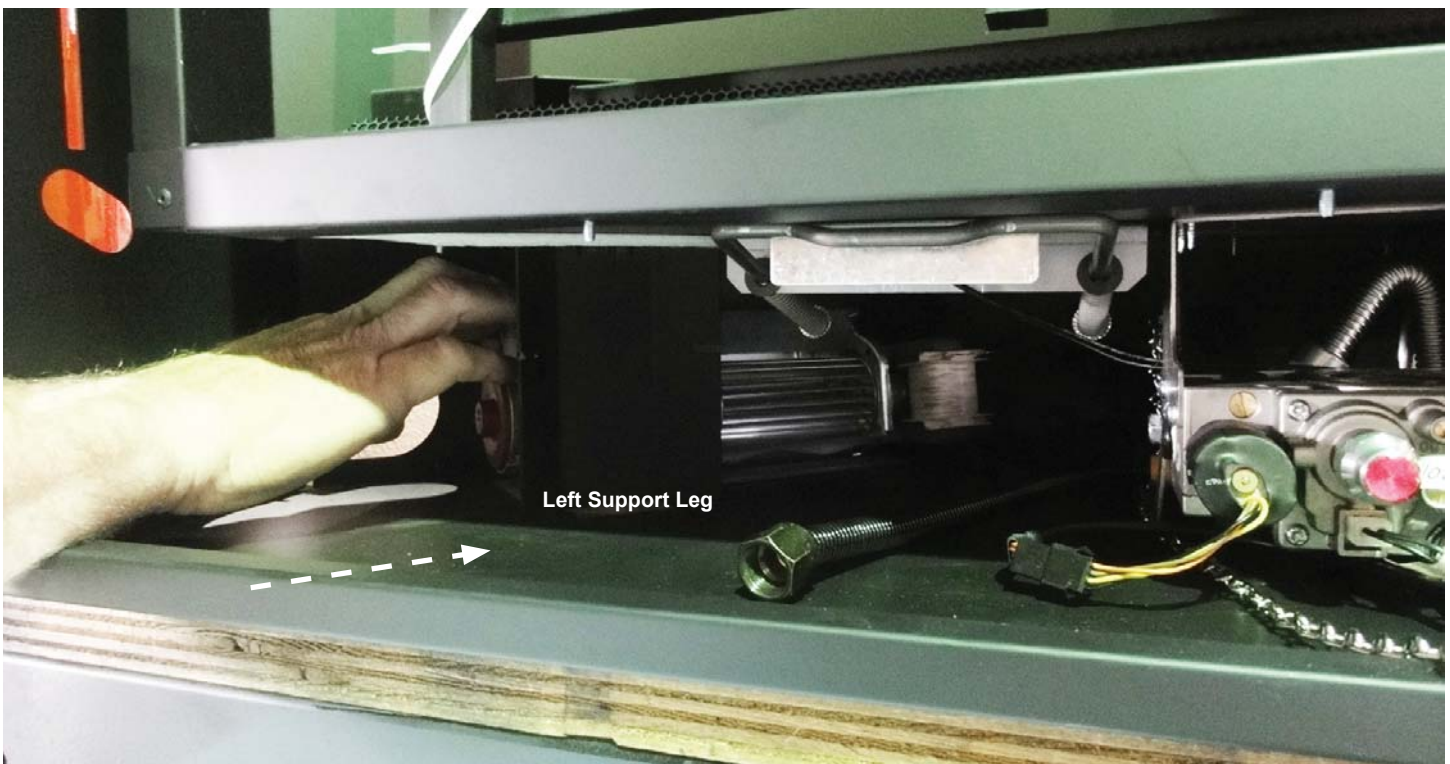


Figure 2

STL-FK160 OPTIONAL FAN INSTALLATION IN VIEWPOINT FIREPLACE

5. Move the module assembly. (It is held in place by velcro strips.) Place the right side blower to the right and behind the support left. Figure 3

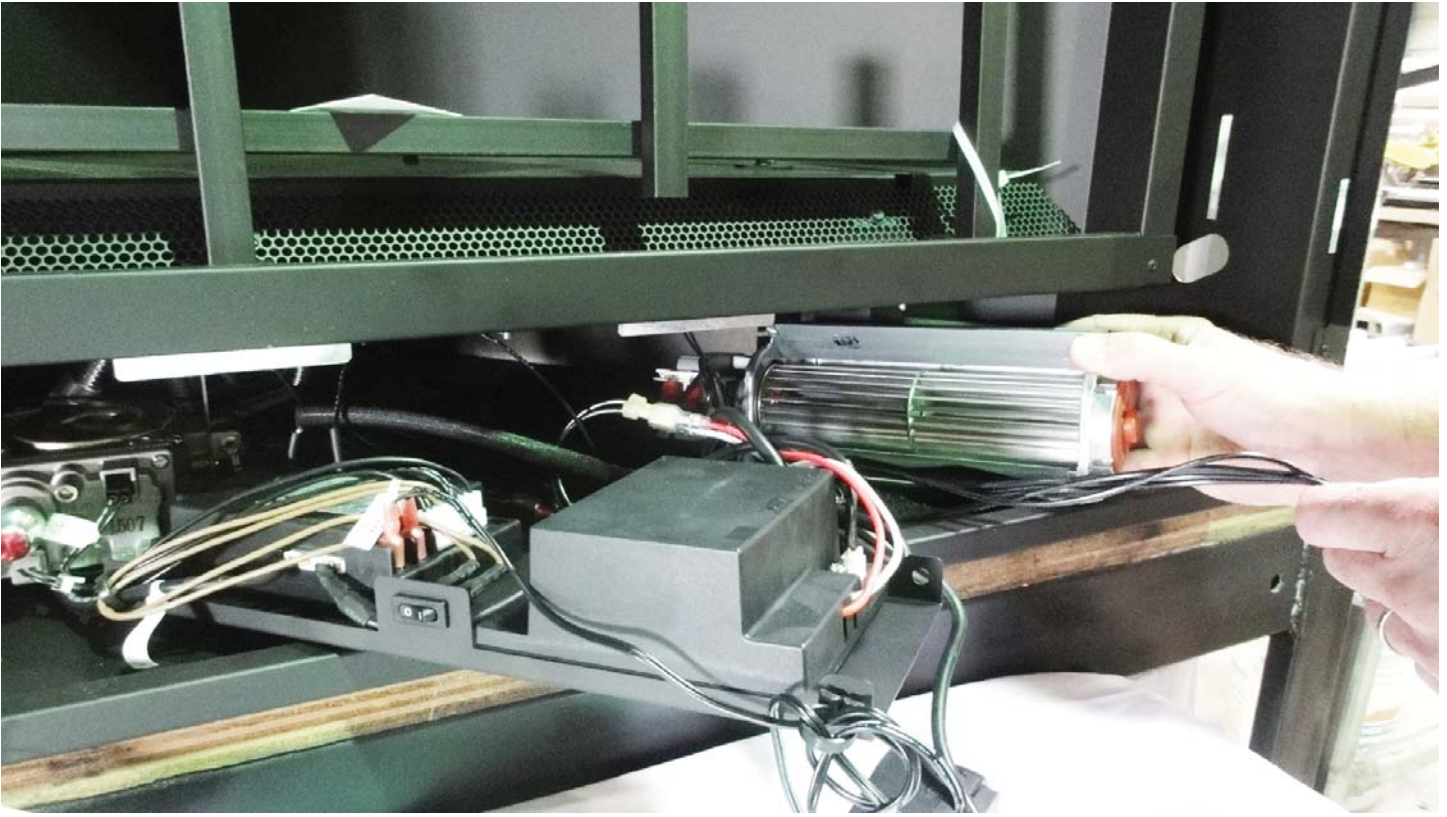


Figure 3

6. Plug the blower into the extension module. Figure 4

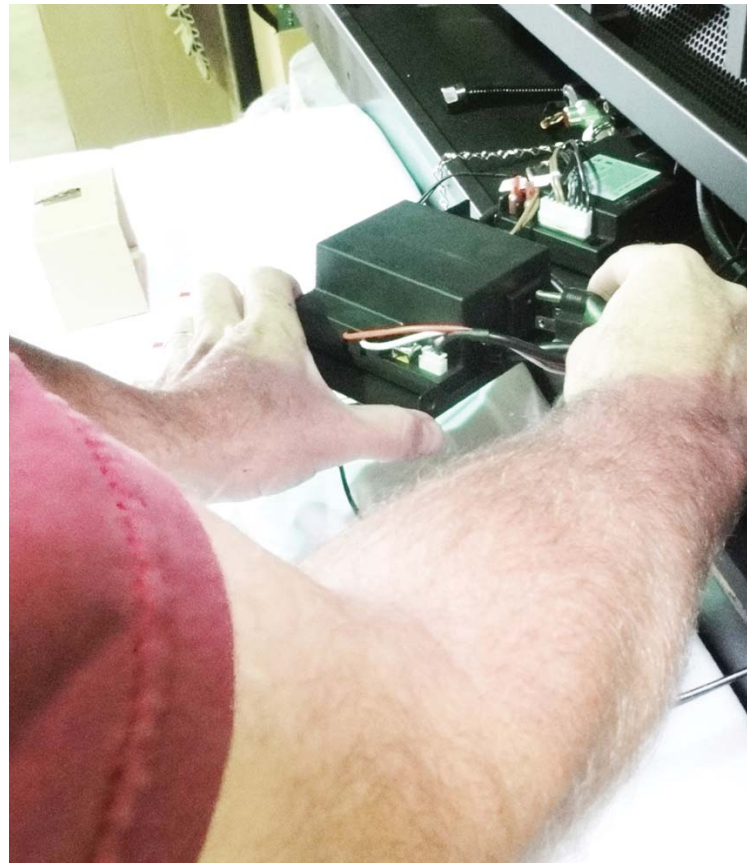


Figure 4

STL-FK160 OPTIONAL FAN INSTALLATION IN VIEWPOINT FIREPLACE

7. Route the blower wires behind valve from right blower to left blower and connect the wires to terminals on the left blower. Figure 5
8. Place both blowers 1/4" from the fireplace walls. Figure 5
9. Plug extension module into the electrical junction box. Figure 5
10. Place module assembly back in original spot on the velcro strips.
11. Replace the lower vanity panel, glass assembly and decorative front.
12. Reconnect power and turn on the fireplace.

In about 5 minutes the fan should start, providing the fireplaces remote control transmitter's fan button is set to setting 1-6.

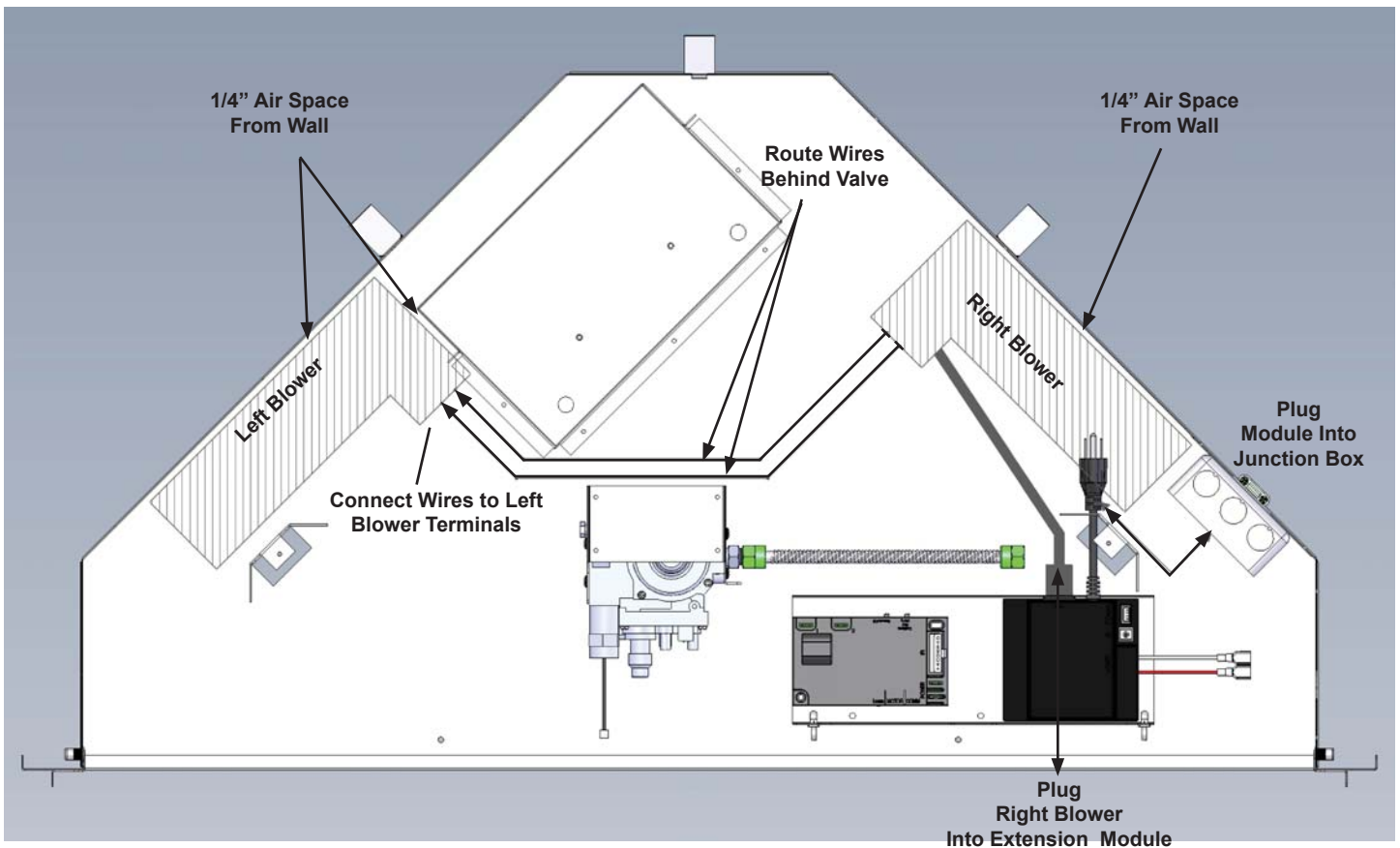


Figure 5